

@electrifyingwmn
#electrifyingwomen
Electrifyingwomen.org

Image:

The Electrical Association for
Women All-Electric House,
Stoke Bishop, Bristol, 1935.



Electrifying Women: A Fresh Perspective on the Electrical Association for Women

Emily Rees and Graeme Gooday, University of Leeds

Electrifying Women Project

- Who we are
 - Dr Emily Rees (Research and Engagement Assistant, University of Leeds)
 - Professor Graeme Gooday (Professor of History of Science and Technology, University of Leeds)
 - Dr Elizabeth Bruton (Curator of Engineering & Technology, Science Museum)
- Project aims
 - To highlight the long history of women in engineering
 - To share it with as wide an audience as possible
 - Working in partnership with WES and IET
 - Increased participation - creative writing, discussions and wikithons

The centenary of the Women's Engineering Society

- The Women's Engineering Society (WES) founded in UK June 23rd 1919
- The first women's engineering society in the world
- Founded by seven women including Lady Katharine Parsons
- Aim #1: To promote the study and practice of engineering among women; and...
- Aim #2: To enable technical women to exchange ideas on training, employment etc



The Woman Engineer

- WES's in-house publication for women in engineering
- 1919-2014
- Still being produced today
- [Digitized via IET](#)

Cover of the Woman Engineer, vol 1, no 10



The Electrical Association for Women, 1924...

- EAW a spin-off from WES: careers for women as electricity lecturers
- Aim to reduce domestic drudgery via electrical labour-saving devices
- First President of EAW: Lady Nancy Astor, Conservative MP amused that women were 'expecting to be emancipated by electricity'
- Peak EAW aim: to promote wide adoption of electrified homes with installation work by women, e.g. homes for solo 'lady bachelors'
- Training activities for women in 'Electrical Housecraft' 1924-1986
- EAW work advertised and reported widely in The Woman Engineer

THE ELECTRICAL ASSOCIATION FOR WOMEN INCORPORATED

ACTIVITIES

Annual Conference for Members
Affiliation of Schools
Area and Branch Organisations
Branch Officers' Conference
Certificate and Diploma in Electrical Housecraft for Demonstrators and Saleswomen
Certificate and Diploma in Electrical Housecraft for Teachers
Classes and Certificate for Home Workers
Demonstrators' Circles
E.A.W. All-Electric House at Bristol
Electrical Housecraft Training established through Colleges
Enquiries and Reports on Design and Performance of Domestic Electrical Apparatus and Accessories
Exhibition of Working Class Kitchens
Home Workers' Circles
House Design and Equipment
Information Bureau and Exhibition Work
Kitchen Planning Campaign and Competition
Lecture Courses for Speakers
Motion Study in Housecraft Films
National Training and Diploma Committee
Special Theoretical and Practical Courses for Housewives, Teachers, Demonstrators and Students
Summer Schools for Teachers
Teachers' Circles
Training and Employment Committees

PUBLICATIONS

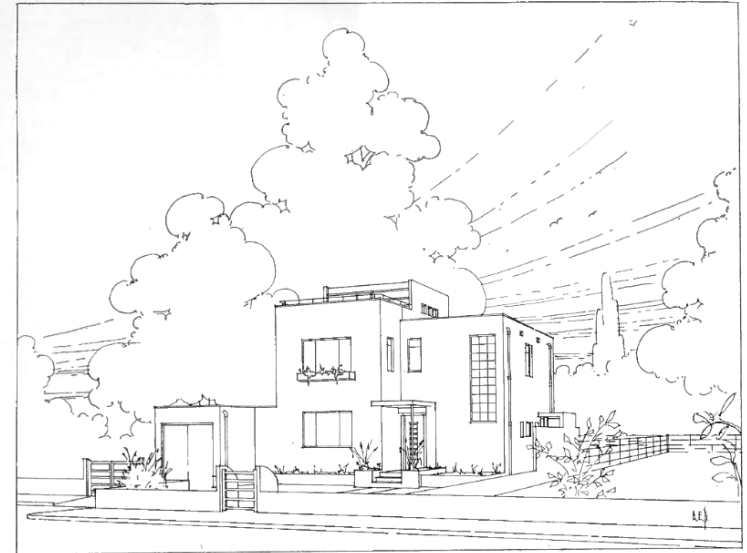
An Electrical Adventure
The Case for Electricity
Coronation Cookery Book
The E.A.W. All-Electric House
The Electrical Age
(Quarterly Magazine)
The Electrical Handbook for Women
Electricity and Home Appliances
Electricity without Tears
"How it Works," series of charts showing the construction of domestic electrical appliances
Instructional charts on the generation and distribution of electricity, and the house wiring
The Rays
Recipes for the Electric Cooker
Report on Electricity in Working Class Homes
Useful Information for Everywoman
Useful Information for the Countrywoman

The Electrical
Association
for Women

20, Regent Street
London
S.W.1

EAW
advertising in
1935

THE ELECTRICAL ASSOCIATION FOR WOMEN INCORPORATED



Every Woman Everywhere

has had a longing, sometimes latent, often abandoned
as futile, to live in a home that is beautiful

WHERE eye and ear are never jarred
WHERE the only odours are those that whet the appetite
WHERE management is directed by a fairy wand
WHERE her own good temper will flourish
WHERE her family can never ruffle her

briefly,

Every Woman has dreamed Did YOU ever see a DREAM?

The E.A.W. "DREAM HOUSE" at Bristol

Will be officially opened by Catherine, Countess of Westmorland,
on Wednesday, 23rd October, 1935.

And will be OPEN TO THE PUBLIC for ONE MONTH, from October 25th.

All-Electric House, Bristol 1935

Commissioned by EAW's Bristol Branch for building at Withey Close West, Stoke Bishop

Bristol-based architect, builders & electricians
- all aiming at simplicity, utility & beauty

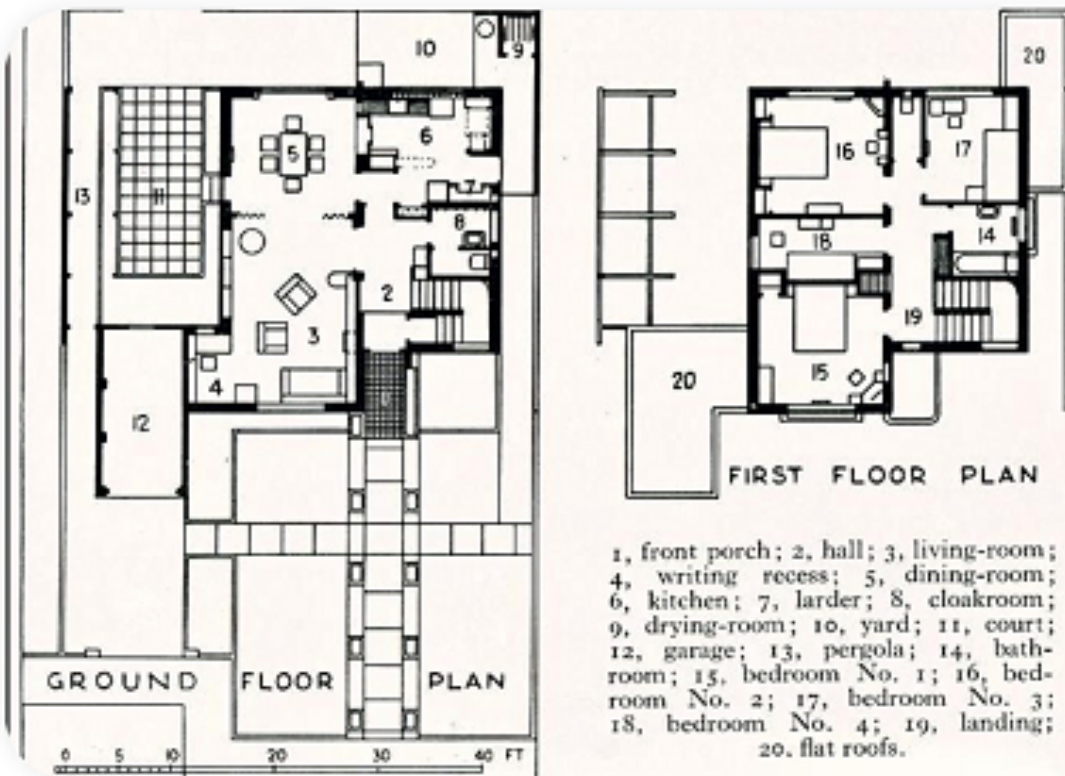
Illustrates labour-saving & comfort of electrical equipment and how to plan its installation

6 inset fires, 3 directional fires, 12ft. of heating pipes, 3 electric clocks, 1 linen cupboard heater, 1 towel rail, 1 refrigerator and 1 electric fan

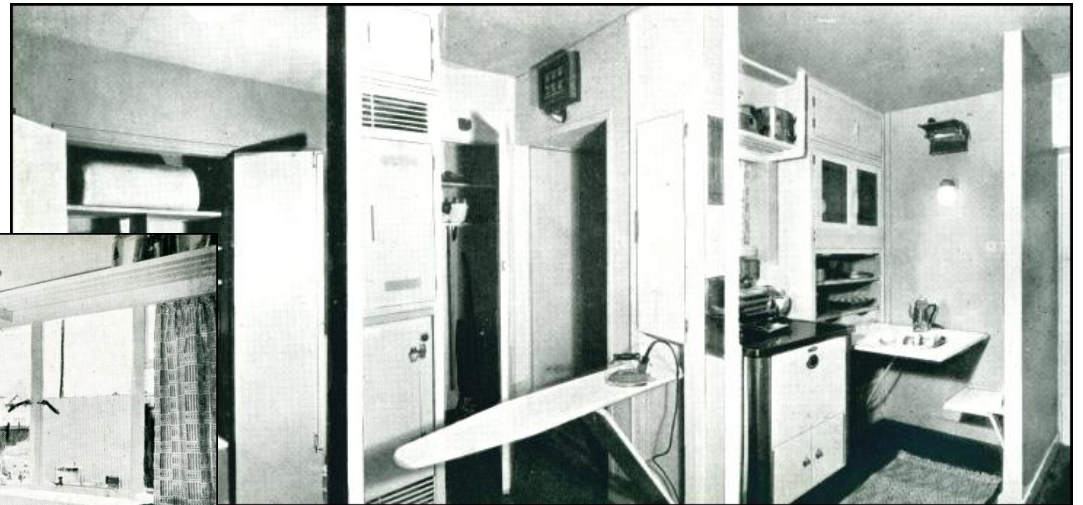
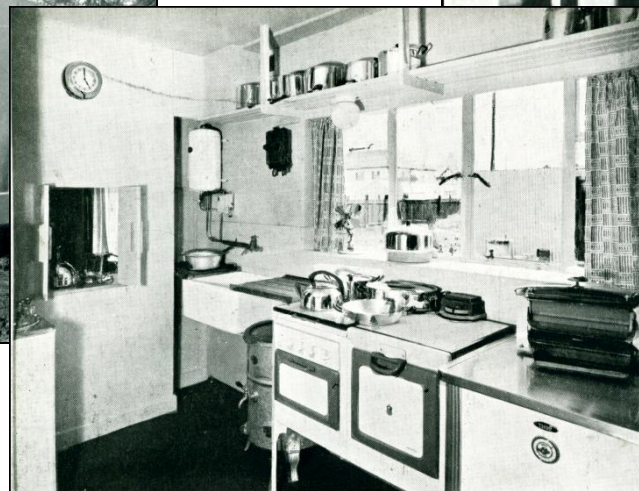
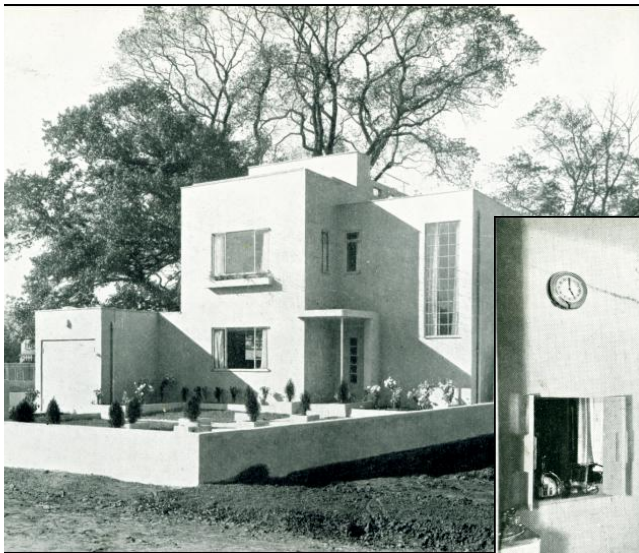
Not included: Electric cooker & storage heaters
- available on hire

Running cost est. at £30 per year

<http://www.historyworld.co.uk>



- Bristol All-Electric House open to the public October-November 1935
- Positive press reviews of elegance & utility, although only two such houses built
- Too expensive for the majority of house buyers: most used gas for cooking & heating
- But a future vision of electrification demonstrated in a practical working form



THE ELECTRICAL HANDBOOK FOR WOMEN



Lecture Kitchen of the E.A.W. Housecraft School.

Frontispiece

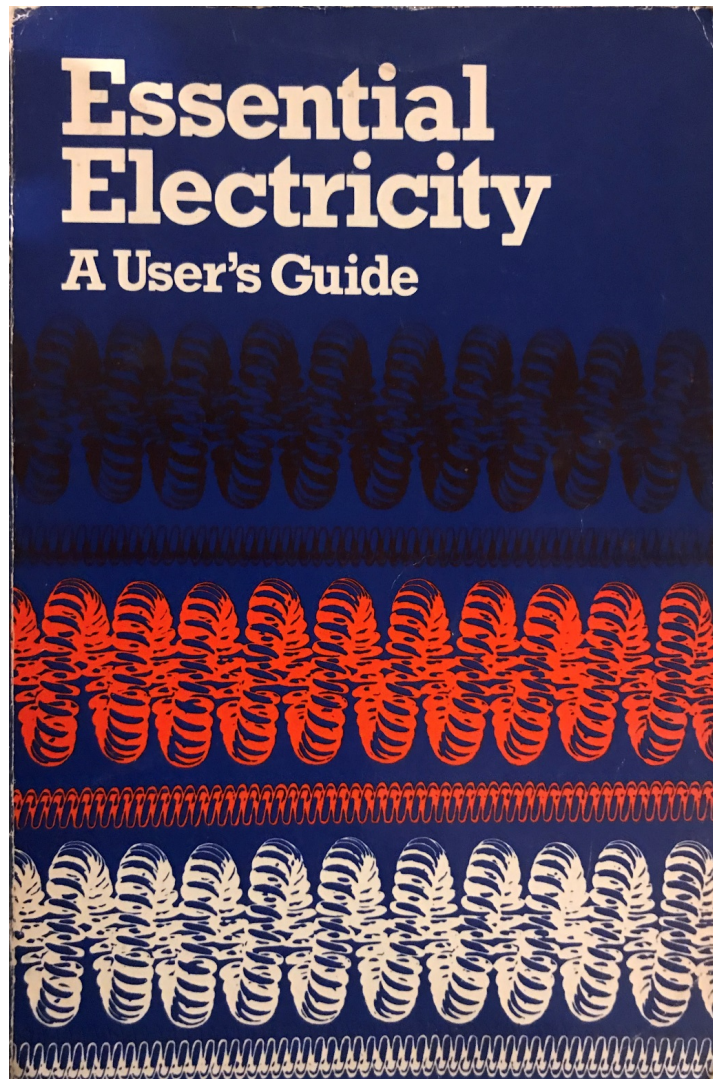
THE ELECTRICAL HANDBOOK FOR WOMEN

Edited for
THE
ELECTRICAL ASSOCIATION FOR WOMEN

by
CAROLINE HASLETT, C.B.E.

Foreword
by
Sir JOHN SNELL, G.B.E., M.Inst.C.E., M.I.E.E.

LONDON
HODDER & STOUGHTON, LIMITED
1934



Final (10th edition) of the Electrical Handbook for Women in 1983

Renamed *Essential Electricity - a User's Guide*

No mention of any special role for women

Rational usage of electricity in the home by then everyone's business!

Implicitly included lessons of the Bristol All-Electric Home about rational planning

Keep in touch



Email:
electrifyingwomen@gmail.com



Website:
<https://electrifyingwomen.org/>



Twitter: @ElectrifyingWmn